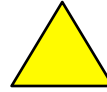




CRAB TEAM ID GUIDE



Filled, yellow stars indicate organisms that are expected to be common in traps

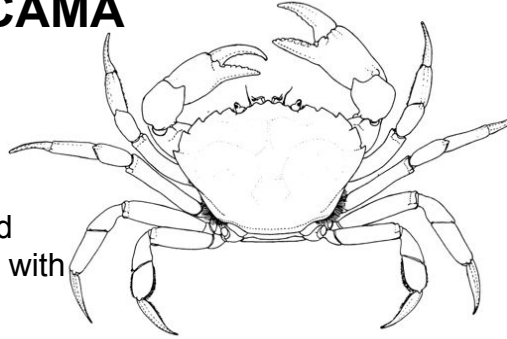


Filled, yellow triangles indicate organisms likely encountered in molt/shore survey

EUROPEAN GREEN CRAB - CAMA

Carcinus maenas

- Carapace: oval to 90mm; 5 prominent marginal teeth, 3 rostral bumps
- Claws: not rounded
- Walking legs: last pair slightly flattened
- Color: green, brown, reddish, typically with orange joints

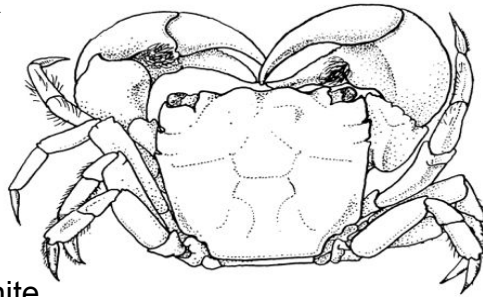


© Greg Jensen

HAIRY SHORE CRAB - HEOR

Hemigrapsus oregonensis

- Carapace: square to 50mm; 3 forward-pointing marginal teeth, 2 rostral bumps
- Claws: rounded, often w/ fleshy tufts, typically no spots
- Walking legs: with fine sparse hairs
- Color: variable, green, brown, yellow, white

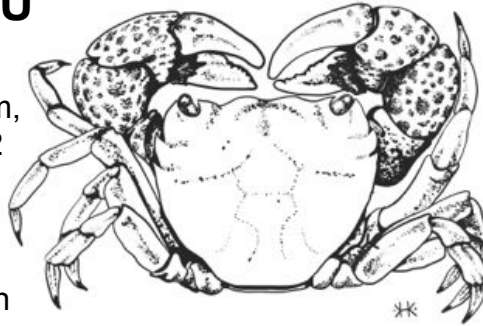


© Greg Jensen

PURPLE SHORE CRAB - HENU

Hemigrapsus nudus

- Carapace: as HEOR above, but to 60mm, marginal teeth rounded slightly inward, 2 rostral bumps less pronounced
- Claws: as HEOR, but often with spots
- Walking legs: no hairs
- Color: variable, purple, red, yellow, green

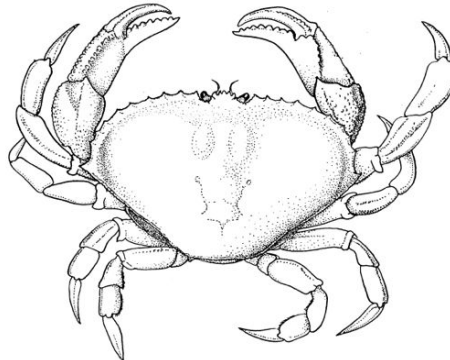


© Greg Jensen

DUNGENESS CRAB - MEMA

Cancer (Metacarcinus) magister

- Carapace: oval to 230mm; 10 marginal teeth and widest at 10th tooth
- Claws: serrations on outside of dactyl
- Walking legs: Long light-colored with hairs
- Color: light reddish-brown to purple

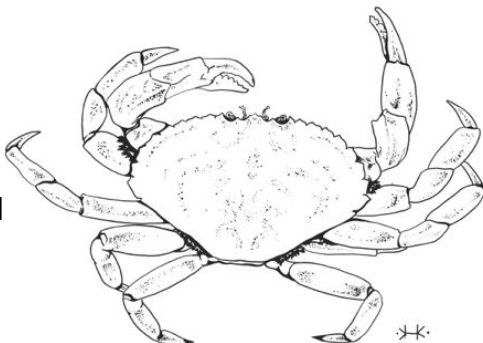


© Greg Jensen

GRACEFUL CRAB - MEGR

Cancer (Metacarcinus) gracilis

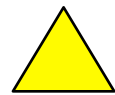
- Carapace: oval to 115mm; 10 marginal teeth and widest at 9th tooth
- Claws: no serrations on outside of dactyl
- Walking legs: Long purplish hairless
- Color: light reddish-brown to purple



© Greg Jensen



Filled, yellow stars indicate organisms that are expected to be common in traps

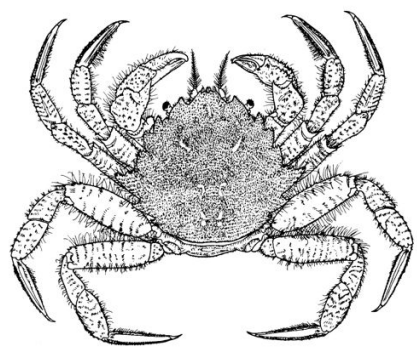


Filled, yellow triangles indicate organisms likely encountered in molt/shore survey

HAIRY HELMET CRAB - TECH

Telmessus cheiragonus

- Carapace: diamond to 100mm; 6 prominent marginal teeth widest at the 5th; hairy
- Claws: small similar to walking legs; hairy
- Walking legs: long and hairy
- Color: olive green to yellow; orange-brown hairs

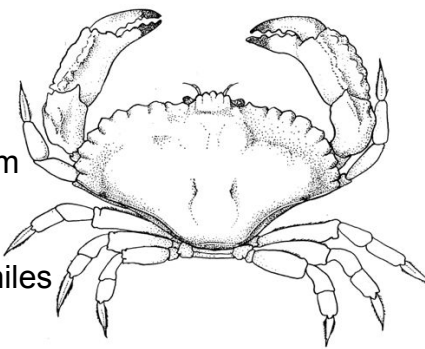


© Greg Jensen

RED ROCK CRAB - CAPR

Cancer productus

- Carapace: fan to 200mm; 10 rounded marginal teeth, 5 bumps on protruding rostrum
- Claws: large with black tips
- Walking legs: small and thin
- Color: red to brown; variable patterns in juveniles including stripes and blotches



© Jeff Adams

SPIDER CRABS – SPID

Multiple species grouped from the family Majidae: (eg, *Pugettia producta*, *P. gracilis*, *Scyra acutifrons*)

- Carapace: longer front-back than wide with rostrum protruding far beyond eyes
- Claws: long and thin
- Walking legs: long with sharp tips
- Color: variable, dark green to reddish brown; “kelp colored”



© Wendy Feltham

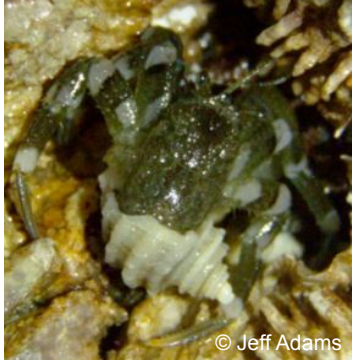


© Jeff Adams

HAIRY HERMIT CRAB – PAHI

Pagurus hirsutiusculus

- White bands on legs; most consistent on 2nd to last segment of walking legs
- Banded antennae
- Typically hairs cover legs
- Often in small shells, often abandons shell when disturbed



© Jeff Adams



© Greg Jensen

GRAINY HERMIT CRAB – PAGR

Pagurus granosimanus

- White to blue tubercles on claws and legs, giving a “grainy” appearance
- Orange, unbanded antennae
- Often inhabits very large shells, will not abandon shell when disturbed



© Jeff Adams



© Greg Jensen

© University of Washington Board of Regents. Color photos printed by permission. European green crab illustration reprinted by permission from Field Studies Council Publications, Preston Montford, Shrewsbury, Shropshire, Great Britain. *Cancer (Metacarcinus) magister*, *Cancer productus*, *Hemigrapsus oregonensis* illustrations reprinted by permission of Paul and Lynn Rudy, from *Oregon Estuarine Invertebrates*. *Telmessus cheiragonus* illustration reprinted by courtesy of the Royal B.C. Museum, Victoria, British Columbia, Canada, from *Crabs and Their Relatives of British Columbia*, by Josephine F.L. Hart, Fig. 83. *Hemigrapsus nudus* and *Cancer (Metacarcinus) gracilis* courtesy of Kirstin Holsman. Burrowing shrimp courtesy of Dave Cowles, Rosario.wallawalla.edu. This project has been funded wholly or in part by the United States Environmental Protection Agency under assistance agreement PC 00J29801 to Washington Department of Fish and Wildlife. The contents of this document do not necessarily reflect the views and policies of the Environmental Protection Agency, nor does mention of trade names or commercial products constitute endorsement or recommendation for use.





LESS COMMON ORGANISMS THAT MIGHT APPEAR ONLY AS MOLTS



BLACK-CLAWED CRAB - LOBE

Lophopanopeus bellus

- Carapace to 40mm; Pentagonal with 3 marginal teeth
- Large, black-tipped claws
- Hairs on walking legs
- Greyish-purple with white and brown



© Greg Jensen

BROKENBACK SHRIMP - BROK

Multiple species from the families Pandalidae and Hippolytidae

- Laterally compressed
- Prominent rostrum
- “broken” back
- Small indistinct claws
- Long walking legs
- Color variable



© Greg Jensen

PYGMY ROCK CRAB - GLOR

Cancer (Glebocarcinus) oregonensis

- Carapace to 53mm; circular with 10 marginal teeth, widest at 7th
- Large, black-tipped claws
- Hairy walking legs
- Color brownish red



© Jeff Adams

SAND SHRIMP - SAND

Multiple species from the family Crangonidae

- Dorso-ventrally compressed
- Indistinct rostrum
- Flattened back
- Small subchelate claws
- Short walking legs
- Color “sandy”



© Greg Jensen

PEA CRAB - PEAS

Multiple species from the family Pinnotheridae

- Carapace to 11mm; oblong oval; smooth with no marginal teeth; no rostrum
- Claws small and indistinct
- Color variable



© Greg Jensen

BURROWING SHRIMP - BURR

Multiple species of infraorder Thalassinidea

- Dorso-ventrally compressed
- Large abdomen with broad tail fan
- Hairy walking legs
- Color pale white, pink, or grey



© Dave Cowles

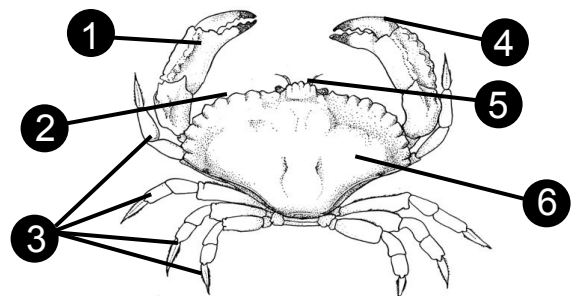
PORCELAIN CRAB - PORC

Multiple species from the family Porcellanidae

- Carapace to 19mm; circular; no marginal teeth
- Dorso-ventrally flattened
- 3 pairs of walking legs
- Flattened claws
- Long antennae



© Jeff Adams



- | | |
|--------------------------------------|-------------|
| 1. Claw/Cheliped | 4. Dactyl |
| 2. Marginal teeth/
lateral spines | 5. Rostrum |
| 3. Walking legs | 6. Carapace |



Filled, yellow stars indicate organisms that are expected to be common in traps



Filled, yellow triangles indicate organisms likely encountered in molt/shore survey

STAGHORN SCULPIN - LEAR

Leptocottus armatus

- Flattened body; large head
- Large “antler-like” spines in front of gill covers
- Large lobe-shaped pectoral fins with stripes
- Up to 460mm (~18”)



© Greg Jensen

TIDEPool SCULPIN - OLMA

Oligocottus maculosus

- Large head with long slender body
- 5 saddle patches on body
- Small forked spine on gill cover
- Up to 90mm (~3.5”)



© Greg Jensen

SHINER PERCH - CYAG

Cymatogaster aggregata

- Deep-bodied, narrow “football” shape
- Color greenish-black and silver sides with 3 broad yellow vertical bars
- Up to 203mm (~8”)



© Greg Jensen

THREE-SPINED STICKLEBACK - GAAC

Gasterosteus aculeatus

- Three spines on front of dorsal fin
- Pair of spines in pelvic fins
- Color greenish silver
- Up to 75mm (~3”)



© NOAA

STARRY FLOUNDER – PLST

Platichthys stellatus

- Flatfish with oval body and pointy head
- Can be right- or left- eyed
- Blind side is white, eyed side is olive – dark brown
- Dorsal, anal, and caudal fins with wide black bars
- Light and/or dark spots, and bumpy tubercules
- Up to 910mm



© WDFW